



MRDC

TOKAUT

*Custodians
of tomorrow*

QUARTERLY NEWSLETTER, JUNE EDITION 2019

Babena Elected Director for Pipeline



The 20 major clan chairmen's who took part in the election process gather for a photo with MRDC MD Augustine Mano and the new Director elect Mr. Telabe Babena (seated front row in red cap). Program team lead Imbi Tagune seated far right.

The Mineral Resources Development Company (MRDC) has successfully delivered a second director elect from the PNG LNG Pipeline licence No.4's segments four (4) and five (5) area in Kutubu, to the board of the trust company Gas Resources PNG LNG Pipeline Limited, in April. Sixty nine year old Mr Telabe Babena from Hugu Clan, in Paua village Segment four, was elected through a election process in Moro, Southern Highlands province, facilitated by MRDC through the Electoral Commission of PNG.

The exercise saw twenty (20) clan chairmen's representing the 20 major clans per the Ministerial Determination (G360 and G361) vote for the director on behalf of their people.

Mr Babena received 12 votes out of 20 to win by majority out of five candidates who stood for the election. The runner up being Morayu Sawea from the Yomati Clan,

Kantabo village segment 5, who received 8 votes.

Upon being declared by Electoral commission representative, Mr. Kala Rawali, witnessed by the Managing Director for MRDC, Augustine Mano, the new director vowed to represent both the segments fairly.

"We are all southern Highlanders, lets forget about our tribal boundaries and language differences. We are one people. We are pipeline landowners, we are all Kutubu's. I will treat all our people fairly," said Babena.

"I will do my best to take care of my people in my four year term. If you do decide I am not fit to continue after that, then you have the power to remove me", he said.

Three out of five candidates decided to vote someone else rather than themselves. Babena thanked the four younger candidates for the challenge, but also for giving him the mandate to lead in the board by

not voting themselves.

He urged MRDC to listen to their grievances and asked that his people be treated fairly. School fee's for our children is important and will be a priority for him.

Mr. Babena wants to learn from the lessons of the oil beneficiaries and lead better to make sure gas pipeline landowners see the benefits of the project at the ground level.

MRDC Managing Director Augustine Mano was on hand to receive the director elect and congratulate him as well as all of the chairmen's for the leadership they showed in seeing the MRDC team complete this process. Mr Mano said "The pipeline is 400 kilometres, running from Hela, SHP and Gulf provinces. This was not an easy task in getting a director in place. We started in Kikori and now we are here. You all have shown great leadership by helping my team to bring us all together here today to achieve this outcome.

(cont'd on page 2)



Augustine Mano,
Managing Director, MRDC



Managing Directors MESSAGE

Greetings and welcome to our June edition of the MRDC Tokaut newsletter for 2019.

It's been a busy half year for MRDC already with our key programs for the year already underway. I am pleased to announce that the progress we've made so far is phenomenal. These programs include our PNG LNG Pipeline Segment bank account opening and Directors elections for Segments 1 to 8. We now officially opened bank accounts for 102 clans from Segment 4, 5, 7, and 8 and have two landowner directors successfully elected to the board of the pipeline company, Gas Resources PNG LNG Pipeline limited.

MRDC has made a decision to only allow segments with a benefit percentage split of 15% and higher to have a single director represent them on the board. Any segments with a lower benefit split will combine with other segments to meet the 15% mark. This has been the case with Segments 4 and 5 having one director to represent them, that director is Mr. Telabe Babena. Our headline story will give you an insight on what transpired.

(cont'd from page 1)

The important thing is we want the people to see the benefits of the project".

He assured the director elect and the 19 clan chairmen's that the mistakes of the oil project in Kutubu and Moran will be fixed in the PNG LNG project. Mr Mano explained to the clan chairmen's that the board of the trust company will have to be set up first. There would be Four landowner directors representing segments one (1) to eight (8) which will also include the three provincial gover-

Segments 1, 2 and 3 will also have to combine for 1 director, as their total percentage is 19%. Our External Affairs team led by the General manager Imbi Tagune is currently on the ground running that program.

We expect to have a total of 77 bank accounts opened and a new director to the board of GR-PNGLNGPL by the end of this month. Read more about this story on page 5.

While we celebrate our achievements, we were also reminded of how short life is. At the end of March we lost a great leader, the Late Bill Menim. He was the pioneering chairman of the Mineral Resources Star Mountain Limited. His death a loss, but also saw us celebrate his life and his achievements through the success of MRSM, this story on page 3.

On page 4, we feature an example of a new breed of directors, eager and passionate about improving the lives of their people. Amos Kiki is one, wasting no time in making a difference in his community.

We have a pictorial on pages 6 & 7 showing some photos from our pipeline segments 4 & 5 account opening in Moro in April.

Page 8 is a special feature, on Beneria. Notorious for tribal fights and killings keeps them in isolation, but they are not forgotten. MRDC for the first time visited Beneria last month on a reconnaissance and

nors, Hela, SHP and Gulf provinces and secretary of the DPE.

"Once the board is complete, a chairman will be appointed by the board before benefits can finally go to the people".

The first director representing Segment seven (7) (Kikori, Gulf province), Mr. Wauro Oumabe was elected in November last year. Mr Babena is the second director representing segments four (4) and five (5) in Kutubu. The remaining two directors will come out of segments one (1), two (2), three (3) in Hela

awareness mission to prepare them for the Pipeline Segment 2 clan account opening exercise. What MRDC does daily is all to improve the quality of lives for the beneficiaries whose funds we manage. In order to do this effectively, we need to know the exact numbers of people who we are custodians of. Page 9 I speak of the importance of a population census for project areas.

Our usual Tech Tok edition is featured on page 10. Our technical team share some insight on how seismic exploration is used in PNG. A very interesting read and detailed explanation of some processes in exploration that many of us would not be familiar with.

On Page 11 we bring another special feature which highlights the troubles we go through to reach our beneficiaries. It's not an easy task as I have always said. In this feature, we take a trip with our OK Tedi Liaison officer Alex Wapia on a recent patrol he took, into the remote CMCA Region in Western province

In sports on page 12. MRDC continues its support for sports, with a generous donation to Kagua Erave Football Club and to Team PNG Boxing. As always we believe, sports is a vital tool for development in helping to alleviate social issues.

I hope you enjoy reading about all we've been doing this quarter. Happy Reading!

province and segment six (6) in the Gobe area in Southern Highlands Province. This is the third trust company under MRDC to go through this process of allowing beneficiaries to elect their directors, in a bid by MRDC to improve its governance process to allow for fair and transparent representation of project area beneficiaries. Each landowner board member will serve for a period of four years at a time and go back for re-election at the end of their term.

Level 12, MRDC HAUS, Cnr Musgrave
Street & Champion Parade,
Downtown, Port Moresby.

PO Box 1076, Port Moresby,
National Capital District,
Papua New Guinea

T: (675) 320 0100
F: (675) 320 0299
mrdc.com.pg

Pioneer MRSM Chairman Passes on



General Manager for Investment Mr Clifford Kasi sharing the impact and contributions of the visionary leader Late Former Chairman Bill Menim as his family listens. Also pictured next to Kasi is MRSM Director Mr Amos Kiki. (Insert) The Late Bill Menim.

Great leaders are hard to come by and when one is lost, the void left behind can never really be filled. The Late Bill Menim, former chairman of the Mineral Resources Star Mountain limited (MRSM) is one of those great leaders who lived his life serving his people from the Ok Tedi mine impacted communities, the Western Province at large and Papua New Guinea.

His sudden passing in March came as a shock and a great loss to the people of Tabubil, the landowners of the Ok Tedi Mine, especially his people of Finalbin Village. He left behind his wives Jenny and Heni, and his 9 children and 12 grandchildren. Menim was a servant of his people and will be remembered by his people for many great things. From Finalbin village, in the Star Mountain, Ok Tedi, a majority beneficiary village to the mine, Late Menim served as the Vice President of the Star Mountains Local Level Government before joining the board of MRSM as Chairman from its inception in 1997.

As the Chairman Late Menim raised the company from its toddler years to a fully grown organization contributing to the country's economy while positively impacting the lives of landowners and impacted communities of the Ok Tedi Mine.

The late Bill Menim had been a part

of the MRDC family for over 22 years, providing outstanding leadership and an undivided support to the management and staff in all its operational activities concerning MRSM, until his retirement in 2017. MRDC took on the responsibility of meeting all funeral arrangements of the Late Former Chairman, who passed away in Port Moresby. MRDC's General Manager for Investment Mr Clifford Kasi who has worked closely with the late Menim for over 10 years to build the MRSM Investment portfolio, accompanied the casket back to Tabubil and handed over his body to his family and people.

Mr Kasi described the Late Menim as visionary, never proud, always stayed humble but was an achiever. "He was very instrumental in MRSM's interests in the Pacific Property Trust, Star Mountain Plaza Limited, Hevilift, Bank South Pacific, Fubilan Catering Services, and Tabubil Engineering and most recently the acquisition of direct equity in OTML for and on behalf of the people of Mt Fubilan" said Kasi.

Kasi said MRSM from its humble beginnings would not be where it is today as a successful landowner company without the guidance, leadership and support of the late Menim.

At Menim's passing, the two other

sister subsidiary companies from OK Tedi under MRDC also took the time to acknowledge the great work Menim had done.

The communities of CMCA through their Chairman James Assan thanked the late Menim for his contribution to the establishment of Mineral Resources CMCA Holdings (MRC-MCAH).

"He was instrumental and very supportive in seeing that the CMCA communities' voices were heard during negotiations for a shareholding in OTML through the State's 33 per cent transfer of shares" said Assan.

Western Province Governor and Chairman of Mineral Resources Ok Tedi No 2 Governor Awi Yoto also acknowledged the Late Menim and his contributions to Western Province.

Governor Yoto said MROT and MRSM have had a great partnership in successfully distributing the benefits of the Ok Tedi Mine to the people, under the leadership of late Menim. The late Bill Menim now rests at the foot of the Star Mountain, as a reminder that he watches as a humble servant. As the quote from Abraham Lincoln goes "But in the end, It is not the years in your life that count but the life in your years". Late Menim has done his part, his legacy will live on.

Kiki: Making a Difference in Wangbin and Migalsim Communities



In less than 3 years of his election as director to the board of Mineral Resources Star Mountains (MRSB), Amos Kiki is wasting no time taking care of his people's need.

His community from Migalsim and Wangbin villages have since received close to five hundred thousand kina (K500,000) in school fees, sporting items, medical, and church donations.

And this is solely through the directors "Public Relations" Fund. He took the time in May to call a meeting in Tabubil with the leaders of the two villages to provide a report on what has been done. The meeting was well received by the leaders who appreciated his transparency, which has never been done in the past.

During the meeting, Director Kiki explained the process in which his people or community groups can request for assistance.

"There is a process in place to request. You must write to me formally, state what your needs are. But remember this takes time. I may approve it, but MRDC must vet the request before final approval from management", explained Kiki.

He told them the funds are there to help assist the community, but they must also be responsible for the assistance they receive.

"Take care of donations, if it's a vehicle or equipment, you must take care of them, he said.

The director also presented sporting uniforms to the Wangbin and Migalsim soccer and darts teams in the town competitions.

The uniforms went to Wang Lakers and Sakups soccer club, while he presented dart uniforms to Sakups, Lakatoi, Sakol Bom & Sab Matup. He also announced the sponsorship of a full band set for the Abip Youth group Band as well as a 15 seater bus for students to travel from Migalsim to town.

Director Kiki through his 2018 and 2019 PR funds has assisted in the following;

1. EDUCATION ASSISTANCE	K129,839.70
2. COMMUNITY GROUP ASSISTANCE	K297,082.76
3. HEALTH ASSISTANCE	K53,022.12



"Take care of donations, if it's a vehicle or equipment, you must take care of them"

Pipeline LO's a step closer to receiving benefits

Landowners beneficiaries of the PNG LNG Pipeline are a step closer to receiving their long awaited benefits from the PNG LNG project as the Mineral Resources Development Company (MRDC) pushes on to set up clan bank accounts and have the board of the trust company in place. MRDC as the state nominee tasked with managing the benefits of the pipeline landowners from segments one (1) to eight (8) under the PNG LNG Pipeline licence NO. 4, has successfully facilitated the opening of 58 clan bank accounts and delivered a second director elect from segments four (4) and five (5) to the board of the trust company Gas Resources PNG LNG Pipeline Limited, in April.

With the support of stakeholders, Department of Petroleum & Energy (DPE), Kumul Petroleum Holdings (K-PHL), Exxon Mobil PNG (EMPNG), Oil Search (OSL), Bank South Pacific (BSP) and the Electoral Commission of PNG (ECPNG), and the police, MRDC carried out a four week exercise which saw the opening of 58 clan bank accounts in which the outstanding benefits will be paid to and conduct the election of a director to represent the two segments.

During the first two weeks exercise the MRDC team led by MRDC General Manager for External Affairs and Sustainable Development, Imbi Tagune conducted awareness on how the benefits would be shared per the oil and gas act, preparing them for the opening of the bank accounts and election of their director, and importantly educating them about the trust company and its processes once it was fully set up. In the third week, the 58 (20 major and 38 sub-clan) bank accounts were set up through the Moro Branch of Bank South Pacific (BSP). MRDC also photographed all clan signatories to go on benefit certificates which will go into a database to be used by the DPE, BSP and



BSP officer from Moro branch opening the Waidobo Clan from Tubage Village (segment 4) bank account.



MRDC field coordinator Kini Renagi, explaining the bank account opening process to a clan.



DPE officer Ken James (standing) and Eileen Murepe from MRDC going through the paperwork before each clan comes in to open their bank accounts.

MRDC to identify the beneficiaries when issues arise. The final week of the exercise saw the Electoral Commission of PNG (ECPNG) conduct a non-parliamentary election of the director for segments 3 & 4 in which Mr. Telabe Babena was elected. Despite minor disputes over clan signatories to the bank accounts, the team with the support of its stakeholders helped the clans resolve their issues, seeing them successfully set up their accounts. Mr Imbi Tagune thanked the two segments for allowing for a peaceful exercise by cooperating with his team on the ground.

"I thank all our partners, and all those involved in helping to successfully complete this program for segments 4 and 5. This is not the end, we have four more segments to complete before we can see the benefits flow to the people". This exercise is the half way mark in setting up the process for benefits to flow as well as seeing the trust company set up. Segments eight (8) seven (7), four (4) and five (5) are complete, leaving segments one (1), two (2), three (3) and six (6) to follow in the next few months in a similar process.

OUT & ABOUT

Photos from PNG LNG
segment 4 & 5 account
opening & directors election







Beneria NOT Forgotten

MRDC General Manager for External affairs and Sustainable Development Imbi Tagune addressing the people at Beneria Village.

"The PNG LNG Project comes to the people as a beacon of hope, and vehicle for change and prosperity, in which the Mineral Resources Development Company (MRDC) comes into play as the driver to manoeuvre this vehicle to greater heights"

A small ECPNG mission station located on the banks of the Beneria River in Hela Province, accommodates the sleeping giant of PNG LNG Pipeline, which runs through the crater of mountains and onto the hills.

The pipeline runs through the customary land of 210 clans under category A, B and C in Segment 2 of the pipeline licence area under the Ministerial Determination No. G181. This makes Beneria landowners the biggest beneficiaries holding 14.03 % in the PNG LNG Project. The PNG LNG Project comes to the people as a beacon of hope, and vehicle for change and prosperity, in which the Mineral Resources Development Company (MRDC) comes into play as the driver to manoeuvre this vehicle to greater heights.

MRDC is mandated by the State as a trustee of the landowners' interests in the petroleum and mining projects in the country. MRDC uses the Mining and Oil & Gas Acts to manage these funds accordingly. The company strives to create wealth, which generates income for

the future of the people. This is mainly with the aim of achieving sustainability after the life span of the projects.

MRDC assures improvements in the living standards for landowners of Pipeline License Four (PL No.4) Segments 1 to 8 in Hela, Southern Highlands, Gulf and Central Provinces.

The company has done and continues to do so with the Plant Site landowners from Papa, Porebada, Boera and Rea-Rea just outside of Port Moresby.

MRDC will manage the landowners' interest as per the Oil and Gas Act, which is; 40% to be paid directly to the landowners as equity and royalty, 30% for Community Infrastructure Trust Fund (CITF) which is used to build Community Infrastructure Projects such as schools, health posts, roads, etc. while the other 30% is used to create wealth through investments for future generation.

With that, the MRDC is now on the ground to open the bank accounts for the beneficiaries of segments 1, 2 and 3.

Population Census Key in Effective Service Delivery

A population census is very important in order to deliver services effectively to the project area landowners.

This was the sentiments of MRDC Managing Director Augustine Mano as he continues to steer the organisation towards effectively managing landowner funds so the benefits are seen and felt on the ground. Mr Mano says the company will soon be embarking on a project area beneficiary census program in order to capture the exact number of the population in these areas. This data will then allow for the organisation to plan and deliver services to the beneficiaries using the Community Infrastructure Trust Fund (CITF). "Where responsible state agencies lack in being able to provide the data we need then we have to step in to assist if it means to help our people fully benefit from the projects.

"The data MRDC currently has is only up to the clan executive levels, which we need to open bank accounts where royalties are to be paid to" says Mano.

MRDC holds landowner bio data's for clan executives only in the form of a benefit certificate, which is used to identify them by the Bank, DPE and for internal business.

Mano says the MRDC cannot just go in and build schools or hospitals without knowing the number of population these will service.

"I don't want us to deliver white elephants. We must have the data to be able to manage and measure how effectively we are reaching the people through the infrastructure projects we build," says Mano.

As part of MRDC's long term plans for the census exercise, it has already begun the ground work. The company is currently part of an Ok Tedi Mine (OTML) community patrol team who are facilitating the rolling out of the National Identification (NID) registration program for the population in the Community Mine



Samari villagers in the Kiwaba Region reading the MRDC Tokaut Newsletter which is being distributed to communities on the OTML facilitated NID program.



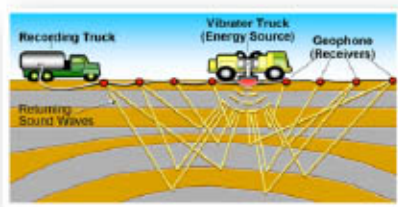
NID officers taking photo IDs and collecting biometrics of individuals in Aberegerema village in the Manawete region on the OTML facilitated NID program.

Continuation Agreement (CMCA) regions in Western Province. The information gathered will help OTML to better distribute compensation benefits to the population. MRDC will also use this data collected to know the exact number of beneficiaries under Mineral Resources CMCA Holdings (MRCMAH) which holds their 12 per cent equity in the OK Tedi Mine to effectively

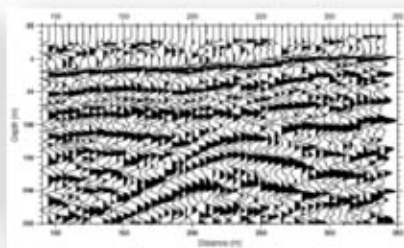
deliver basic services needed by the people.

The team is observing the OTML exercise to be able to design and implement a similar program for the oil and gas project areas. MRDC is also using the opportunity to visit and speak to the people about MRDC's role in managing their trust company, MRCMAH.

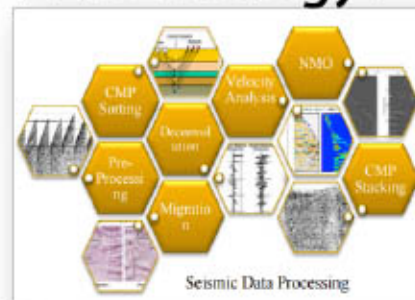
How is Seismic exploration used in PNG Geology?



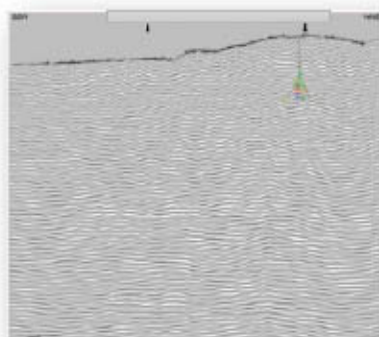
[a] Seismic Acquisition on Land



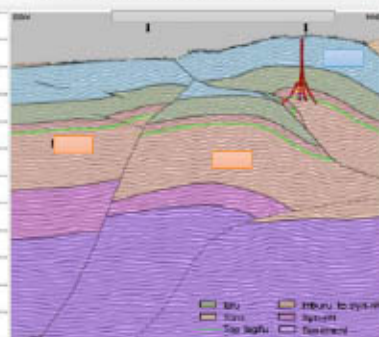
[b] Seismic reflection data



[c] Seismic Data Processing



[d] Seismic Data before structural interpretation



[e] Geological structure from structural interpretation

Before we can answer that question, we must first understand how seismic reflection works and the simple science behind it that solves one of the most fundamental questions to mankind "How do we know what is below the sub-surface".

Reflection seismology

Or seismic reflection has many Geos might call it, is a method of exploration geophysics that uses the principles of seismology to estimate the properties of the Earth's subsurface from reflected seismic waves. The method requires a controlled seismic source of energy, such as dynamite or Tovex blast, specialised gun or a seismic vibrator.

The sounds that enter into the solid earth will reflect back sound energy with respect to the property of the rock or fluids that lies beneath the subsurface. There will be a Geophone receiver on the surface that receives these return waves and record it as seismic data. Diagram [a] and [b] will have illustrated this simple phenomenon.

Reflection seismology is used extensively in a number of fields, but this article will talk exclusively about hydrocarbon exploration and its processes and interpretation. The fact that Seismology is specialised type of Geology, indicates the massive amount of work, study, operation and finance that is needed to accomplish this part of hydrocarbon exploration.

Hydrocarbon exploration

Reflection seismology, more commonly referred to as "seismic reflection" or abbreviated to "seismic" within the hydrocarbon industry, is used by petroleum geologists and geophysicists to map and interpret potential petroleum reservoirs. The primary environments for seismic exploration are land, the transition zone and marine

Seismic data processing

There are three main processes: deconvolution, common-midpoint (CMP) stacking and migration.

i. Deconvolution is a process that tries to extract the reflectivity series of the Earth, under the assumption that a seismic trace is just the reflectivity series of the Earth convolved with distorting filters.

ii. CMP stacking is a robust process that uses the fact that a particular location in the subsurface will have been sampled numerous times and at different offsets.

iii. Seismic migration is the process by which seismic events are geometrically re-located in either space or time to the location the event occurred in the subsurface rather than the location that it was recorded at the surface, thereby creating a more accurate image of the subsurface.

Seismic data processing must occur before seismic interpretation.

Seismic interpretation

The goal of seismic interpretation is to obtain a coherent geological story from the map of processed seismic reflections. The aim of this is to produce structural maps that reflect the spatial variation in depth of certain geological layers. Using these maps hydrocarbon traps can be identified and models of the subsurface can be created that allow volume calculations to be made.

In hydrocarbon exploration, the features that the interpreter is particularly trying to delineate are the parts that make up a petroleum reservoir – the source rock, the reservoir rock, the seal and trap.

Seismic Exploration in PNG

PNG has one of the most complex geology and one of the youngest sedimentary basins in the world. Hence exploration in PNG is one of the most brutal and expensive exercise, just ask

any Geologist. However, we need seismic exploration to pin point the geological prospects and drill in the right spots to find hydrocarbon.

Diagram [d] and [e] illustrates the seismic data being interpreted by a geophysicist to model out the structural geology after seismic exploration. From here, they can recommend to a drilling engineer and petroleum engineer where to place a well or wells to target hydrocarbon accumulation or reservoirs. Because drilling a well is very expensive, especially in PNG's rugged terrains, it makes economic sense to use seismic exploration as an integral part of exploration.

Seismic exploration and impact on Local landowners

For the locals at projects sites, seismic explorations are a great source of income. It's tough terrain and only the locals would be capable to master their own land.

Seismic exploration is often done within couple of months and not always permanent form of income for locals.

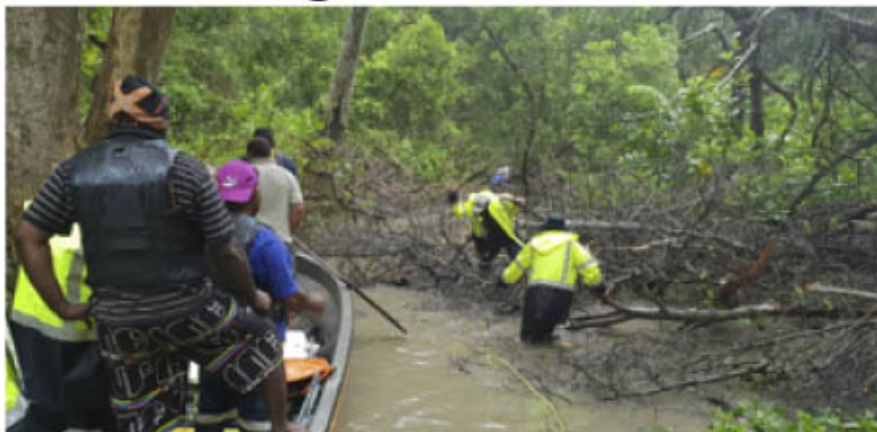
This can often leave locals feeling lost if proper awareness is not engaged at the onset of exploration.

More often great sense of expectation is felt by locals when seismic activities occur on their land. Since not all seismic will find hydrocarbon, any seismic is a good as it adds on to understanding a regional view of the sub-surface underworld.

A Seismic line is always shot in a straight line. Hence, in diagram [f] it shows how a seismic is done on the land, in Hides mountains back in 1996. Where wood terrace steps are laid in a straight line, no matter the contour of the terrain, this activity is called bridging.



Reaching our beneficiaries



The team heading to Oromosapua village in the Kiwai region.



The team coming ashore to travel to a village in Kiwaba Region despite the heavy rains, the program must continue.

Through crocodile infested waters, knee deep mud banks, back breaking long dingy rides to rough seas and sea sickness, it's all part of the job in reaching our very remote beneficiaries in the CMCA region in Western Province.

This has been the experience of Alex Wapia, MRDC's Ok Tedi Mine field liaison officer who has been part of a community patrol team from Ok Tedi Mine who are helping to roll out the National Identification (NID) registration program for the population from the region.

The program is into its second month, out of a nine month long patrol which will cover the entire Fly River region communities. The team are based on board the OTDF patrol boat and take the 40 foot dinghies out to visit the river communities. On one of Alex's weekly report to the executive management of MRDC, he wrote of the hardships the team

faced "Due to Strong winds, the sea is very rough and we are getting sea sick. We can't sail through the rough seas.

On one village visit he wrote, we have to leave the dinghies in shallow waters and walk through muddy tracks and swamps. We almost got attacked by a crocodile but due to local knowledge from our operators we escaped unhurt".

In another village he writes, "we were confronted and almost attacked by locals due to WPPDTF case at the sea shore. The entire village was waiting for us with Bush knives and axes. OTML took note of the incident and will deal with it later", wrote Alex.

Despite the hurdles in some parts, the reception from majority of the villages has been welcoming. "Generally, communities that we visited really appreciated the information about MRCMCAH and

MRDC as well as the information captured in all the MRDC quarterly magazines. They are happy that MRDC /MRCMCAH are working closely with OTML team and coming out like this to the community unlike previous organisations like PNGSDP" wrote Alex.

They suggest that their directors visit their regions quarterly and inform the communities about latest developments of their company MRCMCAH.

Also two MRCMCA board Directors Kime Sumai (Dudi Region) and Kamen Arawak (Kiwaba region) joined the team the patrol when the team visited their village's communities. This helped to drive the information and messages to the communities in their local dialects. They were very happy with the NID program as this would help to remove ghost names on the CMCA cash compensation booklets.



A one and half hour walk to Samari village through muddy waters. Alex Navigating the slippery and slimy path ahead.



Returning from a 3 hour dingy ride from a village near the mouth of the fly. The team loading the dinghies back on the patrol boat at night as they could not make it back in daylight in rough waters.

Kagua Erave FC gets support from MRDC



Photo credit: PNGFA Facebook page

Kagua Erave FC celebrating their win in the Highlands Conference to qualify to stage-two of the Kumul Petroleum National Soccer League competition. Pictured here with PNGFA President John Kapi Natto and Kumul Petroleum National Soccer League Chairman Benny Popoitai.

“MRDC aims to promote human development and the company believes this can be done through sporting activities such as rugby, football, netball and others”.

MRDC has now extended its helping hands to support the Kagua Erave Football Club from the Southern Highlands Province with a sponsorship of K100, 000 to go towards the operations and management of the club.

This is all thanks to the Managing Director Augustine Mano for making this possible through his generous sponsorship to the club.

MRDC aims to promote human development and the company believes this can be done through sporting activities such as rugby, football, netball and others.

The company through its subsidiaries; Mineral Resources Star Mountain

Ltd and Mineral Resources Ok Tedi Ltd has also increased its support of the Star Mountain Football Club (SMFC) with a combined additional donation of K150, 000 each making a total of K300, 000 to the Club.

MRDC recognises the important role Sports as an agent of change and progress, where it is a vital tool for teaching discipline and character whilst encouraging physical activity, which promotes health and wellness.

MRDC and its subsidiaries are proud to support sports and will continue to do so for the betterment of its beneficiaries.

Mano Assists Team PNG Boxing

In the lead up to the 2019 Pacific Games in Apia, Samoa, the PNG boxing team received a timely assistance from MRDC to help them in their preparations.

The team has been in Port Moresby training, and fell on some hardships along the way. MRDC Managing

director Mr. Augustine Mano stepped in to assist them with K5000 towards the purchase of food items and supplements for the boxers. PNG Amateur Boxing Union's Acting Executive Officer Henry Morabang was very thankful for the support. He said Mr Mano's support, has contrib-

uted greatly towards the team's training for the 2019 Games.

The team recently returned from the Philippines from intense training and are now into their final weeks before they depart with the rest of the Team PNG contingent to Samoa. We wish them all the very best in the Games! Go Team PNG!